





Models	Reference	Description	Qty.	Nº Modules	Leds by Modules	Colour	Voltage		Day/night	Dimensions (X*Y*Z) mm.
--------	-----------	-------------	------	------------	-----------------	--------	---------	--	-----------	------------------------

**Sets of 7 modules Solaris**


	8299843B	IWS-7MDX3LD 21LD SL BLUE BI C/C D/N (REAR-R - FRONT-L)	1	7	3	BLUE	12/24V	YES	YES	458x96x40
	8299842B	IWS-7MDX3LD 21LD SL BLUE BI C/C D/N (REAR-L - FRONT-R)	1	7	3	BLUE	12/24V	YES	YES	458x96x40

**Sets of 10 modules Solaris**

	8299825B	IWS-10MDX3LD 30LD SL BLUE BI C/C D/N (REAR-R - FRONT-L)	1	10	3	BLUE	12/24V	YES	YES	489x249x40
	8299826B	IWS-10MDX3LD 30LD SL BLUE BI C/C D/N (REAR-L - FRONT-R)	1	10	3	BLUE	12/24V	YES	YES	489x249x40

(\*) For A R65 regulations in these emergency lights, they must be approved together with the lenses and the type of vehicle installation.

**FLASHER OPTIONS**

	2006035	MLP-F4, flasher, 4 lights, multivoltage
	2006030	MLP-F8, flasher, 8 lights, multivoltage

**Integrated Warning System**



# IWS Integrated Warning System

**IWS** Integrated Warning System for emergency vehicles, a powerful light solution with several last generation Solaris LED modules distributed all over vehicle perimeter, providing an exceptional 360° degrees coverage around this vehicle at any emergency situation.



**SOLARIS TECHNOLOGY.** Composed by modules of 3 latest-generation Solaris LEDs with parabolic reflector, high intensity and low consumption.



**COMPACT.** Its compact low profile design allows installation in limited spaces.



**LONG LIFE.** Federal Signal Vama's LED technology guarantees a long warning light life, helps to reduce maintenance costs, and increases vehicle rotation.



**EVERY NEED SOLUTIONS.** Easy to install and with a wide range of solutions: day/night mode, cruise light, multivoltage references, blue, amber, red or white LEDs, with or without flasher, etc.

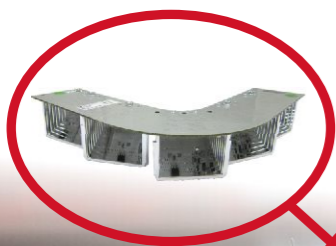
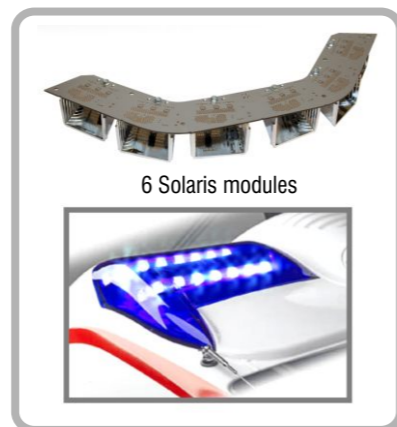
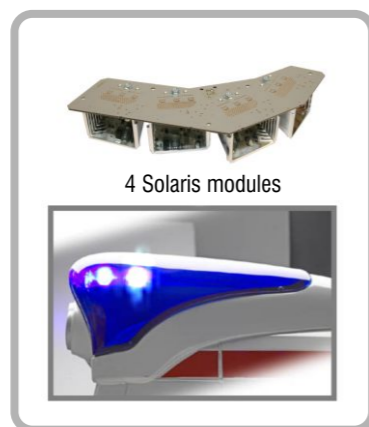
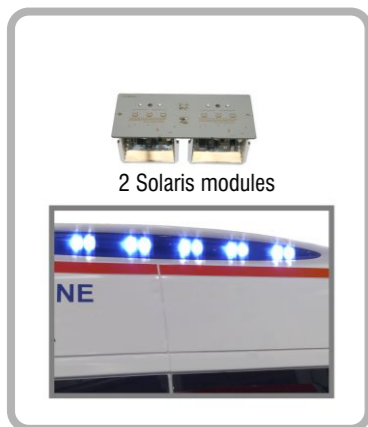
## AVAILABLE MODELS

Models	Reference	Description	Qty.	N° Modules	Leds by Modules	Colour	Voltage	Cruise light	Day/night	Dimensions (X*Y*Z) mm.
<b>Sets of 2 modules Solaris</b>										
	8299895B	IWS-2MDX3LD 6LD SL BLUE BI C/C D/N	1	2	3	BLUE	12/24V	YES	YES	132x58x40
	8299844B	IWS-6X2MDX3LD 36LD SL BLUE BI C/C D/N	6	2	3	BLUE	12V/24V	YES	YES	132x58x40
	8235975W	IWS-2MDX3LD 6LD SL WHITE 12V	1	2	3	WHITE	12V	NO	NO	132x58x40
	8299895R	IWS-2MDX3LD 6LD SL RED BI C/C D/N	1	2	3	RED	12/24V	YES	YES	132x58x40
	8299936A	IWS-2MDX3LD 6LD SL AMBER BI C/C	1	2	3	AMBER	12/24V	YES	NO	132x58x40
	8299936R	IWS-2MDX3LD 6LD SL RED BI C/C	1	2	3	RED	12/24V	YES	NO	132x58x40

<b>Sets of 4 modules Solaris</b>										
	8299849B	IWS-4MDX3LD 12LD SL BLUE BI C/C D/N (REAR-R - FRONT-L)	1	4	3	BLUE	12/24V	YES	YES	159x203,40x40
	8299849A	IWS-4MDX3 LD 12LD SL AMBER BI C/C D/N (REAR-R - FRONT-L)	1	4	3	AMBER	12/24V	YES	YES	159x203,40x40
	8299849R	IWS-4MDX3LD 12LD SL RED BI C/C D/N (REAR-R - FRONT-L)	1	4	3	RED	12/24V	YES	YES	159x203,40x40
	8299850B	IWS-4MDX3LD 12LD SL BLUE BI C/C D/N (REAR-L - FRONT-R)	1	4	3	BLUE	12/24V	YES	YES	159x203,40x40
	8299850A	IWS-4MDX3LD 12LD SL AMBER BI C/C D/N (REAR-L - FRONT-R)	1	4	3	AMBER	12/24V	YES	YES	159x203,40x40
	8299850R	IWS-4MDX3LD 12LD SL RED BI C/C D/N (REAR-L - FRONT-R)	1	4	3	RED	12/24V	YES	YES	159x203,40x40

<b>Sets of 5 modules Solaris</b>										
	8299816B	IWS-5MDX3LD 15LD SL BLUE 12V "L"	1	5	3	BLUE	12V	NO	NO	206x206x40
	8299935A	IWS-5MDX3LD 15LD SL AMBER 12V BI "L"	1	5	3	AMBER	12/24V	NO	NO	206x206x40
	8299935R	IWS-5MDX3LD 15LD SL RED 12V BI "L"	1	5	3	RED	12/24V	NO	NO	206x206x40

<b>Sets of 6 modules Solaris</b>										
	8299821B	IWS-6MDX3LD 18LD SL BLUE BI C/C D/N (REAR-L - FRONT-R)	1	6	3	BLUE	12/24V	YES	YES	390x96x40
	8299822B	IWS-6MDX3LD 18LD SL BLUE BI C/C D/N (REAR-R - FRONR-L)	1	6	3	BLUE	12/24V	YES	YES	390x96x40
	8299815BB11	IWS-6MDX3LD 18LD SL BLUE 12V BI "U"	1	6	3	BLUE	12/24V	NO	NO	393,42x124,34x40



- One single external flasher allows controlling and connecting up to 4/8 warning lights.
- 8 flash patterns available, including R65 mode.
- Two channels independently controlled.

Customized light and dome systems could be developed for large fleets, optimizing possibilities of each vehicle. Please contact our sales force and distributors for more information.