

Technical Specs

	LM400	LP400
Electrical power:	12V or 10-30V	12V or 10-30V
Operating temperature:	-20°C to +50°C	-20°C to +50°C
Current draw (average) in rotator mode:	1 Amp (blue, red and green) 0,6 A (amber)	1 Amp (blue, red and green) 0,6 A (amber)
Current draw (average) in flashing mode:	1 Amp (blue, red and green) 0,6 Amp (amber)	1 Amp (blue and red) 0,6 Amp (amber)
Light technology:	Solaris	Solaris
LED colours:	Blue, red, amber and green	Blue, red and amber
Dome colours:	Blue or clear	Blue, clear or red
Dimensions:	140 mm (diameter - dome) 147 mm (diameter - dome) 86 mm (height)	140 mm (diameter - dome) 147 mm (diameter - dome) 60 mm (height)
Weight:	616 g	395 g

LM400 - LP400 Series

Low profile LED beacons

HOW TO ORDER

Magnet mounting:

- 2002389 **LM400 SL** - LED beacon, (1) flash pattern, (1) parabolic reflector with 15 LEDs, latest generation, high luminosity, blue LEDs, magnetic mounting and cigarette lighter plug, 12V, R-65 approved
- 2002392 **LM400 SL** - LED beacon, (1) flash pattern, (1) parabolic reflector with 15 LEDs latest generation, high luminosity, amber LEDs, clear lens, magnetic mounting and cigarette lighter plug, 12V, R-65 approved
- 2002391 **LM400 SL** - LED beacon, (1) flash pattern, (1) parabolic reflector with 15 LEDs, latest generation, high luminosity, red LEDs, clear lens, magnetic mounting and cigarette lighter plug, 12V, R-65 approved
- 2002401 **LM400 SL** - LED beacon, (1) flash pattern, (1) parabolic reflector with 15 LEDs, latest generation, high luminosity, red LEDs, red lens, magnetic mounting and cigarette lighter plug, 12V.
- 2002397 **LM400 SL** - LED beacon, (1) flash pattern, (1) parabolic reflector with 15 LEDs, latest generation, high luminosity, green LEDs, clear lens, magnetic mounting and cigarette lighter plug, 12V
- 2003017 **LM400 SL** - LED beacon, (2) flash pattern (rotator/flash), (1) parabolic reflector with 15 LEDs, latest generation, high luminosity, blue LEDs, magnetic mounting and cigarette lighter plug, 10-30V, R-65 approved
- 2003018 **LM400 SL** - LED beacon, (2) flash pattern, (1) parabolic reflector with 15 LEDs, latest generation, high luminosity, amber LEDs, amber lens, magnetic mounting and cigarette lighter plug, 10-30V, R-65 approved
- 2003020 **LM400 SL** - LED beacon, (2) levels of light intensity (day/night), (1) parabolic reflector with 15 LEDs, latest generation, high luminosity, blue LEDs, magnetic mounting and cigarette lighter plug, 10-30V, R65 class 2 approved
- 2003053 **LM400 SL** - LED beacon, (8) flash pattern, (1) parabolic reflector with 15 LEDs, latest generation, high luminosity, blue LEDs, magnetic mounting, 10-30V, R-65 approved.
- 2003024 **LM401 SL** - LED beacon, (1) parabolic reflector with 15 LEDs, latest generation, high luminosity, blue LEDs, magnetic mounting and cigarette lighter plug, 10-30V, R65 approved, with selector for 360° or 180°.

* Maximum speed for magnetic mount model on the roof of the vehicle to 200km / h.

** Magnetic mounting models produced for a temporary use on the roof of the vehicle.

Permanent mount:

- 2002390 **LP400 SL** - LED beacon, (1) flash pattern, (1) parabolic reflector with 15 LEDs, latest generation, high luminosity, blue LEDs, permanent mount, 12V, R-65 approved
- 2002393 **LP400 SL** - LED beacon, (1) flash pattern, (1) parabolic reflector with 15 LEDs, latest generation, high luminosity, amber LEDs, clear lens, permanent mount, 12V, R-65 approved
- 2002394 **LP400 SL** - LED beacon, (1) flash pattern, (1) parabolic reflector with 15 LEDs, latest generation, high luminosity, red LEDs, clear lens, permanent mount, 12V, R-65 approved
- 2003016 **LP400 SL** - LED beacon, (8) flash patterns, (1) parabolic reflector with 15 LEDs, latest generation, high luminosity, blue LEDs, blue lens, permanent mount, 10-30V, R-65 approved
- 2003019 **LP400 SL** - LED beacon, (8) flash patterns, (1) parabolic reflector with 15 LEDs, latest generation, high luminosity, amber LEDs, amber lens, permanent mount, 10-30V, R-65 approved
- 2003029 **LP400 SL** - LED beacon, (2) levels of light intensity (day/night), (1) parabolic reflector with 15 LEDs, latest generation, high luminosity, blue LEDs, permanent mount, 10-30V, R65 class 2 approved.
- 2003030 **LP400 SL** - LED beacon, (8) flash patterns, (1) parabolic reflector with 15 LEDs, latest generation, high luminosity, red LEDs, red lens, permanent mount, 10-30V, R-65 approved



LM400 - LP400



Federal Signal Vama presents the **LM400 - LP400 Solaris** series new low profile LED beacons, which feature high luminosity, compact and aerodynamic design.

The Solaris technology means born under the ultimate influence of sun and is formed by a high-efficiency PC board with integrated microprocessor, 15 high-luminosity LED diodes of the latest generation, integrated on the PC board and a parabolic reflector that maximises the luminosity of the LEDs.

The reflector unit and the external spreader lens provide an exceptional light beam with superior off-axis warning, eliminating any dark spots.

Approvals

The LM400 - LP400 Solaris series in blue, amber and red are according to the R-65 European Regulation (T category) and comply with the European Directive 2004/04/CE.

Available colours in blue, red, amber and green.

Both models include a black rubber gasket for perfect adaptation to the roof.

LM400 Solaris

The **LM400 Solaris** model features a magnetic mounting kit with 2 magnets (with anti-scratch silicone) and 2 suction cups. It includes a cigarette lighter plug for easy power source connection.

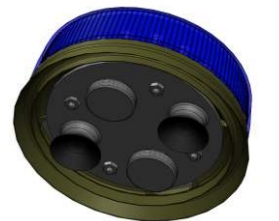
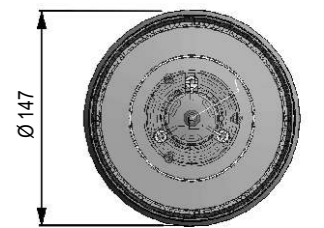
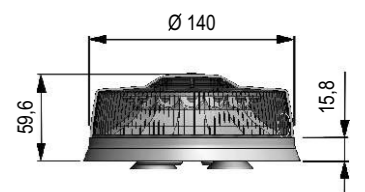
This LED beacon is ideal for undercover police vehicles.

LP400 Solaris

The **LP400 Solaris** is fitted out with a permanent mount and a rubber gasket improve for perfect adaptation to the roof.

The LP400 enables to connect two lights synchronized.

LM400 SOLARIS
Dimensions in mm.



LP400 SOLARIS
Dimensions in mm.

