

# ROTATING LIGHTS



The **LR-015 BD** rotating light for emergency vehicles has been developed to provide silent running and is available in several assembly options.

Externally the LR-015 BD has a cylindrical lens assembled over a circular base. The lens is manufactured in durable shockproof polycarbonate.

Blue and amber versions of the LR-015 BD are homologated according to the R65 Regulation. There are also available versions in red and green.

The base is made from reinforced polyamide and provides the unit with rigidity as well as serving for screwing the unit to the vehicle. The lens twists onto the base, and the lens overlaps the base by 3 cm, thus avoiding water entering the interior. A round rubber joint is assembled between the base and the vehicle, thus ensuring the correct adaptation of the unit with the curves in the vehicle. This joint also acts as a drain, with a hole that lets out any water from the inside of the light. The whole light mechanism is assembled over a metal plate that is fixed to the base by means of three dampers to reduce the transmission of vibrations from the vehicle. The transmission between the pinion and the rotating light is undertaken by means of elastic belts. The carefully developed design means that the vibrations caused by the motor are isolated, enabling the low noise levels of the LR-015 BD to be attained.

### LOW MAINTENANCE

For maintaining the light, the lens can be very easily disassembled. Simply press the button that releases the trigger and turn the lens. Remove the fixing clip and the lamp can be taken out.

### QUICK REFERENCE

#### FEATURES

- Silent belt-driven transmission.
- Adjustable rubber base.
- Versions in blue, amber, red or green.
- Low maintenance.
- Versions for 12 and 24 V.

#### APPROVALS

- Blue and amber versions of the LR-015 BD are homologated according to the R65 Regulation.
- Electromagnetic Compatibility compliance in accordance with Directive 95/54/CE.

#### OPTIONAL ACCESSORIES

- Adaptation base **BD-015** for DIN Tube mounting per ISO 4148.



The ideal solution for the emergency vehicles.

## INSTALLATION

It is possible for the LR-015 BD to be installed either on surface by means of screws or on a DIN tube with a connector. In the second case the adaptation Base BD-015 (#8232387) piece should be acquired separately. It consists of a flat base, also made from reinforced polyamide, which adapts to the lower part of the light and has a cylindrical extension on the lower part for assembling on the outside of a 24-mm duct.

The whole unit complies with the stipulations of the ISO 4148 standard, and, consequently, the bipolar connection complies with ISO 4165.

## HOW TO ORDER

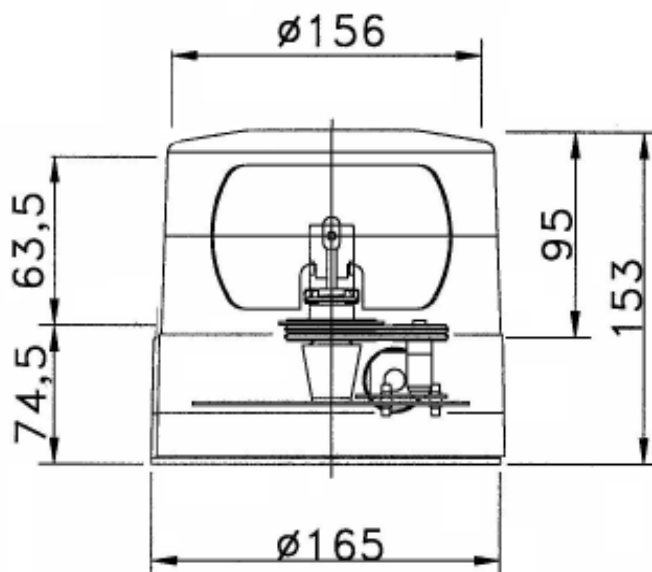
1. Specify model and voltage:

**LR-015 BD** 150RPM Belt driven rotating halogen light, 55W-12V or 70W-24V, permanent mount (E approved).

2. Specify lens colour: amber, blue, red or green.

3. Specify optional accessories:

**BD-015** Adaptation base (#8232387), DIN Tube mounting per ISO 4148 (optional).



Adaptation base **BD-015** (optional)

## SPECIFICATIONS

Power supply	12 Vcc	24 Vcc
Type of lampy	H1	
Power	55 W	70 W
Intensity	4.6 A	2.3 A
Protection fuse to be installed	8A	4A
Flash frequency:	138 rpm	174 rpm
Effective intensity: blue	82 cd	
amber	650 cd	
Size	Ø 165x153 mm	
Weight	0.9 Kg	



An ISO 9001 Certified Company  
**FEDERAL SIGNAL VAMA, S.A.**

Dr. Ferrán, 7  
08339 VILASSAR DE DALT  
BARCELONA ( Spain )  
Phone 34 93 741 79 32  
Fax 34 93 750 78 23  
email: [marketing@vama.es](mailto:marketing@vama.es)  
Web : [www.fedsig.vama.es](http://www.fedsig.vama.es)

